

# MINT COPY

MEDIA DUPLICATION & PRINT

## ARTWORK GUIDE



DESIGN AUTHORING  
PRINT

Standard DVD, Blu-ray and CD discs have a diameter of

- 120mm. The printable area is 118mm and the hole in the centre of the disc is 20mm in diameter

When producing disc face designs you should allow for

- bleed of at least 2mm for both the inner and outer diameters

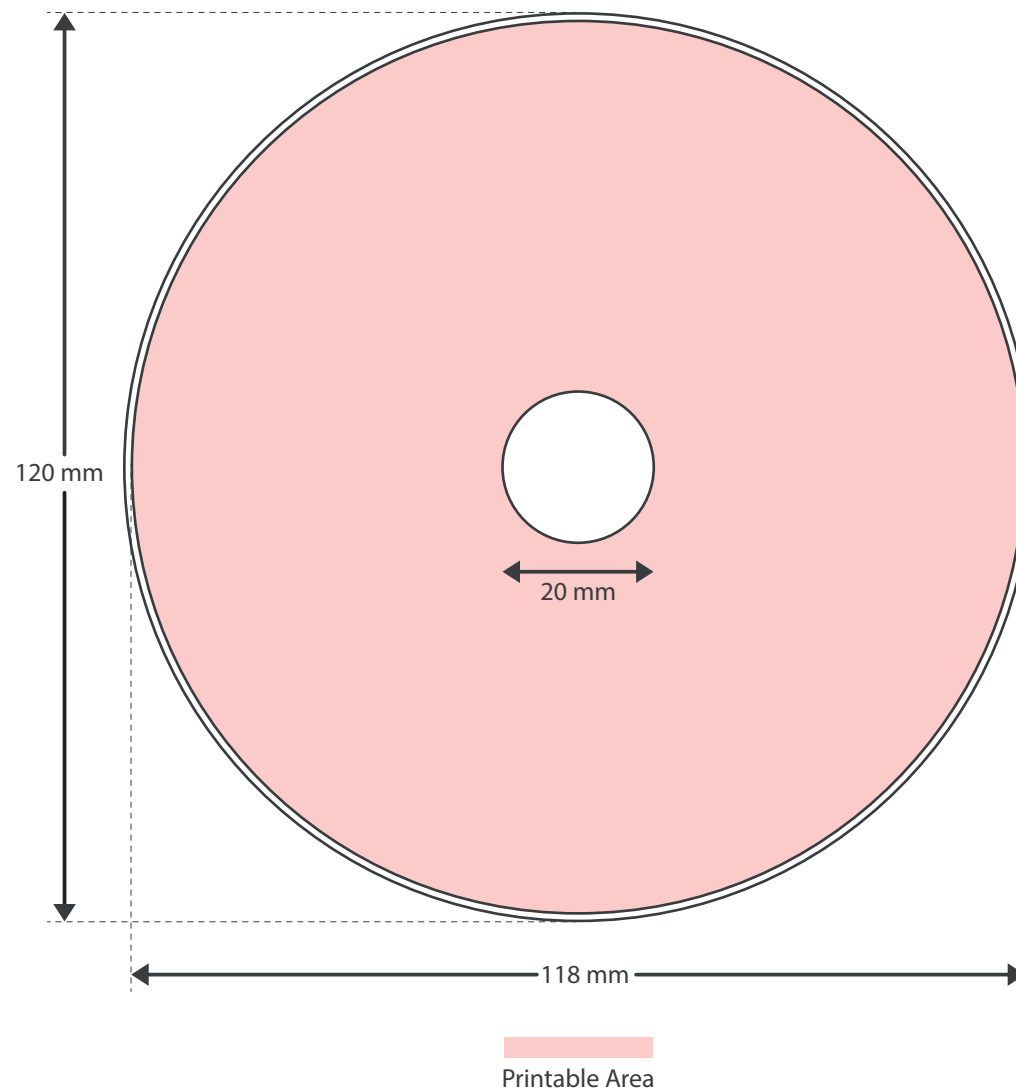
Ideally, artwork should cover the centre hole completely.

- However be aware that any details placed in this area will be removed during the printing process

Please remove all guides from your designs before providing us with the finished artwork

- Artwork should be supplied in the PSD, PDF, EPS or JPEG formats with a minimum 300dpi

- Please note: the colour mode for Duplicated discs is RGB and for Replicated discs is CMYK



No text area

Bleed

Trim

Fold



When designing, avoid placing text too close to the edge and spine of the sleeve. This is to prevent such details from being cropped when the sleeves are guillotined

- Artwork must 'bleed' beyond the edges of your design to help facilitate the guillotining process

- Artwork should be supplied in the PSD, PDF, EPS or JPEG formats at a minimum of 300dpi

- Any fonts used should be provided along with the artwork. Alternatively, type can be converted to outlines prior to the document being supplied

- Slimline CD cases are also available. The specifications for the front inlay are the same as the Jewel case

- Other CD packaging solutions are available, please contact us for further details

CD Inlay  
Front

119.5 mm

120.5 mm

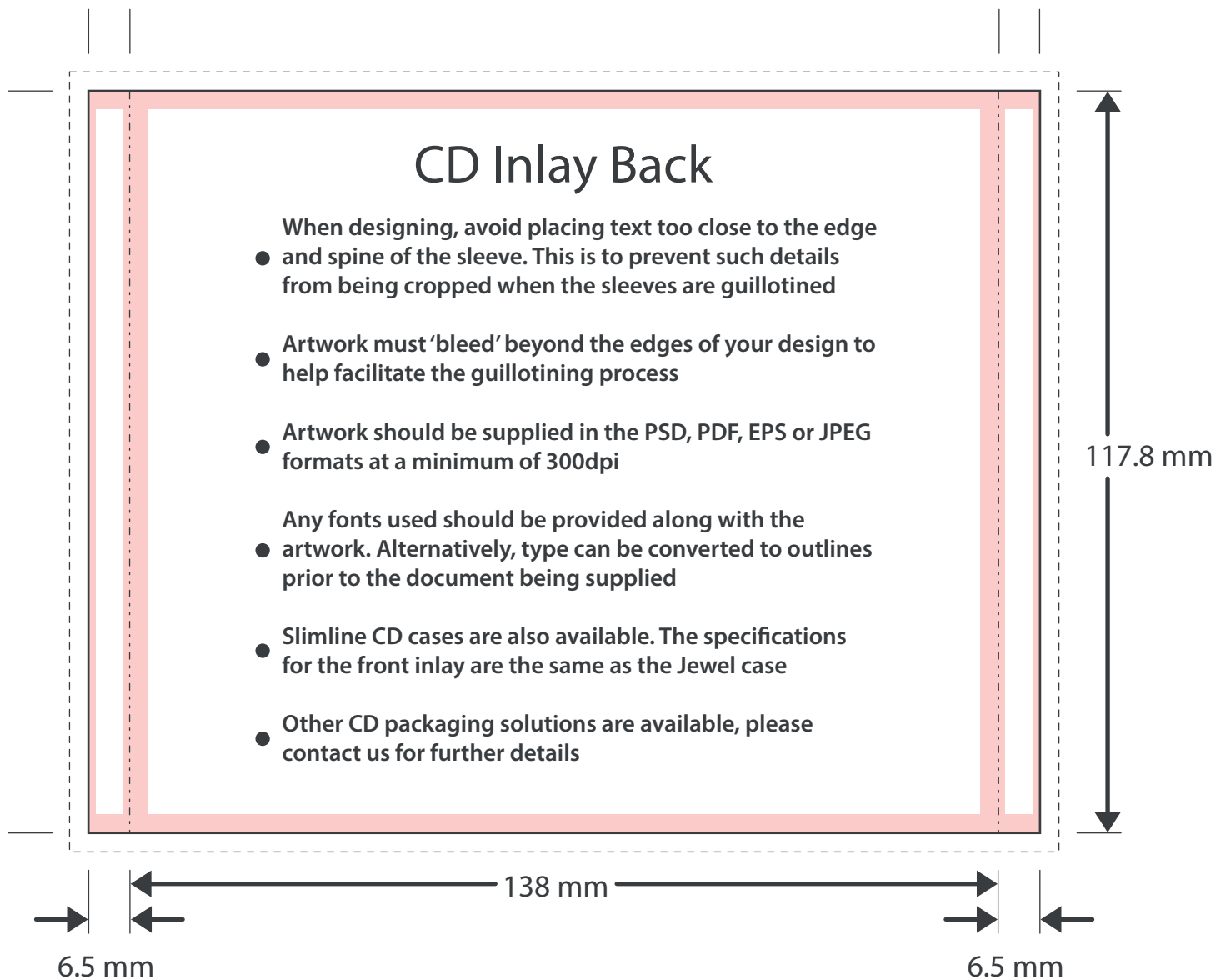
120.5 mm

No text area

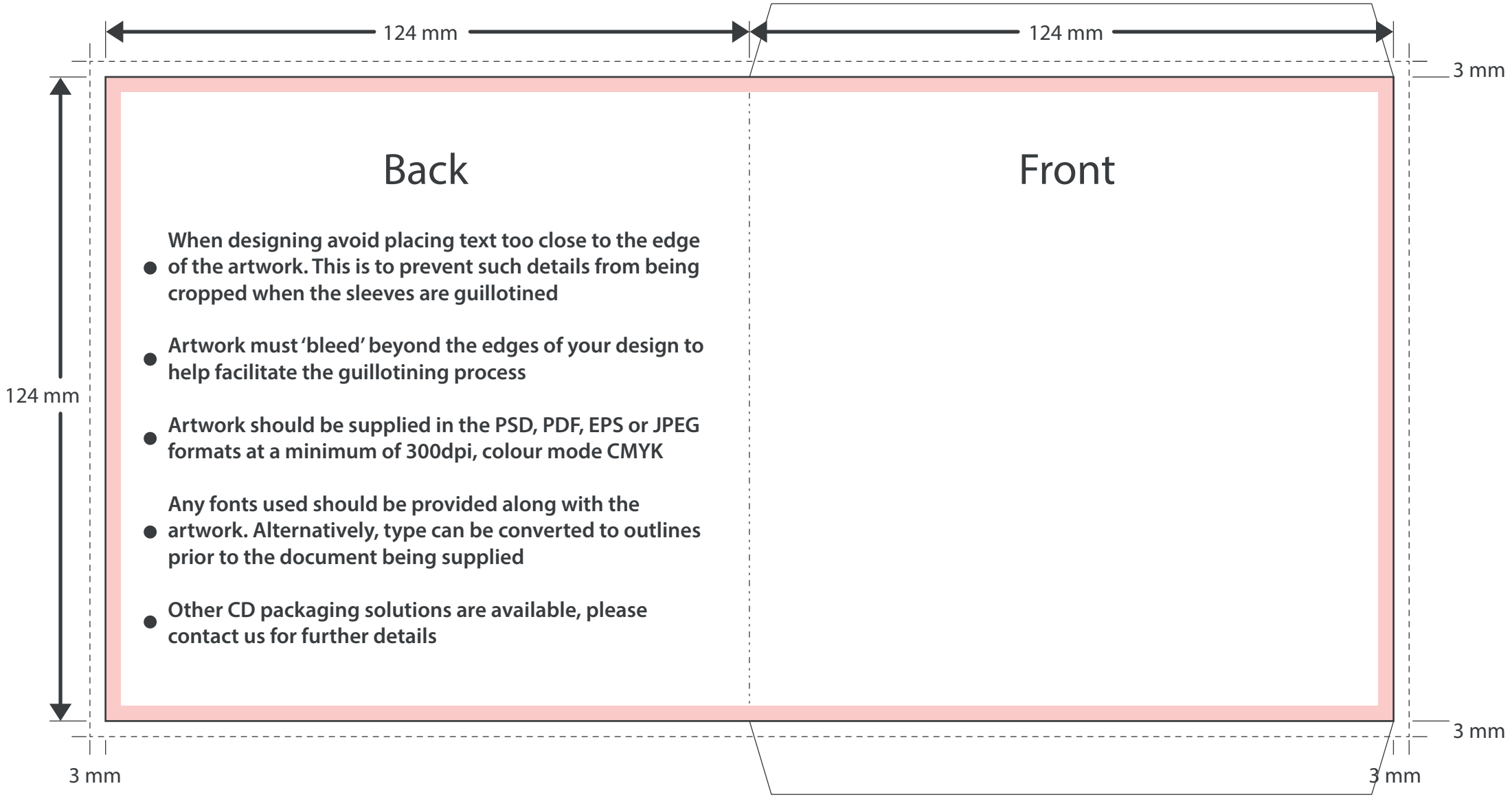
Bleed

Trim

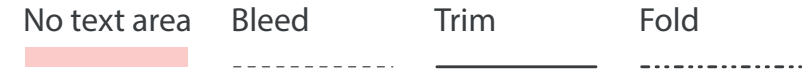
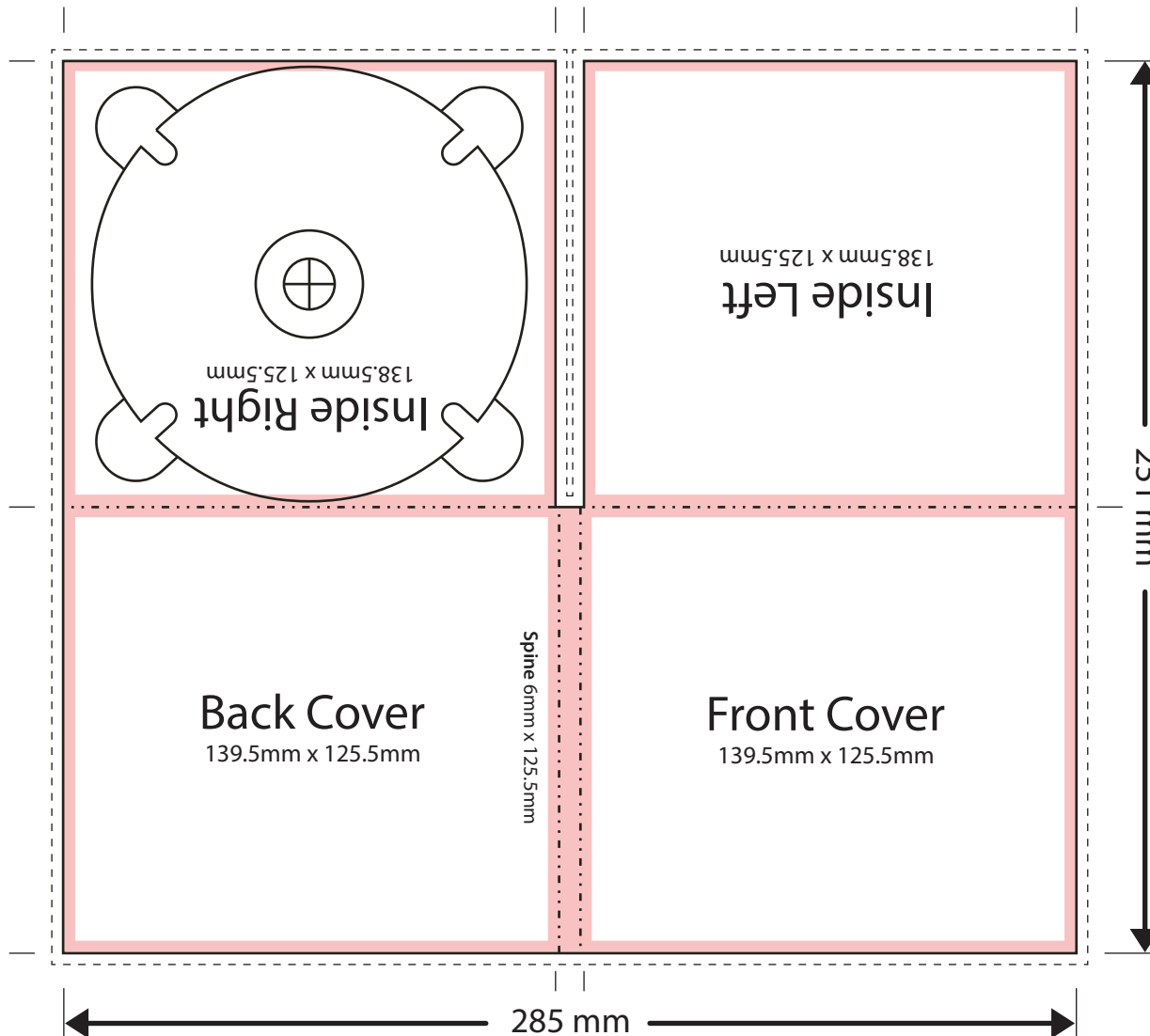
Fold



No text area    Bleed    Trim    Fold



## 4-Panel DigiPak



Please note: This is a guide, not a template. The artwork displayed is 50% smaller than an actual 4-Panel DigiPak.

- When designing avoid placing text too close to the edge of the artwork. This is to prevent such details from being cropped when artwork is guillotined.
- Artwork must 'bleed' beyond the edges of your design to help facilitate the guillotining process.
- Artwork should be supplied in PSD, PDF, EPS, JPG or INDD formats (preferably unflattened) at a minimum of 300 dpi, colour mode CMYK.
- Any fonts used should be provided along with the artwork.
- Alternatively, type can be 'converted to outlines' prior to the document being supplied.

No text area

Bleed

Trim

Fold



Back

Front

- When designing avoid placing text too close to the edge of the artwork. This is to prevent such details from being cropped when artwork is guillotined.
- Artwork must 'bleed' beyond the edges of your design to help facilitate the guillotining process.
  - Insert/inlay artwork should be supplied in PSD, PDF, EPS, JPG or INDD formats (preferably unflattened) at a minimum of 300 dpi, colour mode CMYK.
  - Any fonts used should be provided along with the artwork.
  - Alternatively, type can be 'converted to outlines' prior to the document being supplied.

119.5 mm

120.5 mm

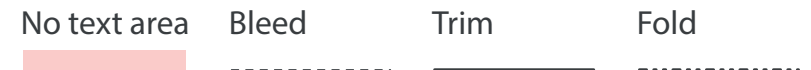
120.5 mm

# MINT COPY

MEDIA DUPLICATION & PRINT

## DVD SLEEVE SPECIFICATIONS

- When designing, avoid placing text too close to the edge and spine of the sleeve. This is to prevent such details from being cropped when the sleeves are guillotined
- Artwork must 'bleed' beyond the edges of your design to help facilitate the guillotining process
- Artwork should be supplied in the PSD, PDF, EPS or JPEG formats at a minimum of 300dpi
- Any fonts used should be provided along with the artwork. Alternatively, type can be converted to outlines prior to the document being supplied
- Slimline DVD cases are also available. The specifications are the same as for a standard case except for the 7mm spine
- Other DVD packaging solutions are available, please contact us for further details



183 mm



# MINT COPY

MEDIA DUPLICATION & PRINT

- When designing, avoid placing text too close to the edge and spine of the sleeve. This is to prevent such details from being cropped when the sleeves are guillotined
- Artwork must 'bleed' beyond the edges of your design to help facilitate the guillotining process
- Artwork should be supplied in the PSD, PDF, EPS or JPEG formats at a minimum of 300dpi
- Any fonts used should be provided along with the artwork. Alternatively, type can be converted to outlines prior to the document being supplied
- Slimline Blu-ray cases are also available. Please contact us for specifications
- Other Blu-ray packaging solutions are available, please contact us for further details

## BLU-RAY SLEEVE SPECIFICATIONS

No text area    Bleed    Trim    Fold



127 mm

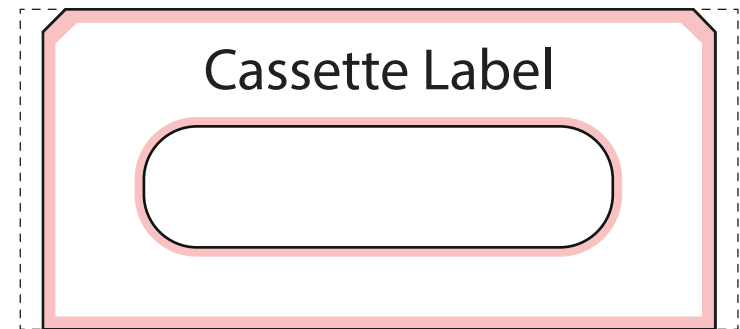
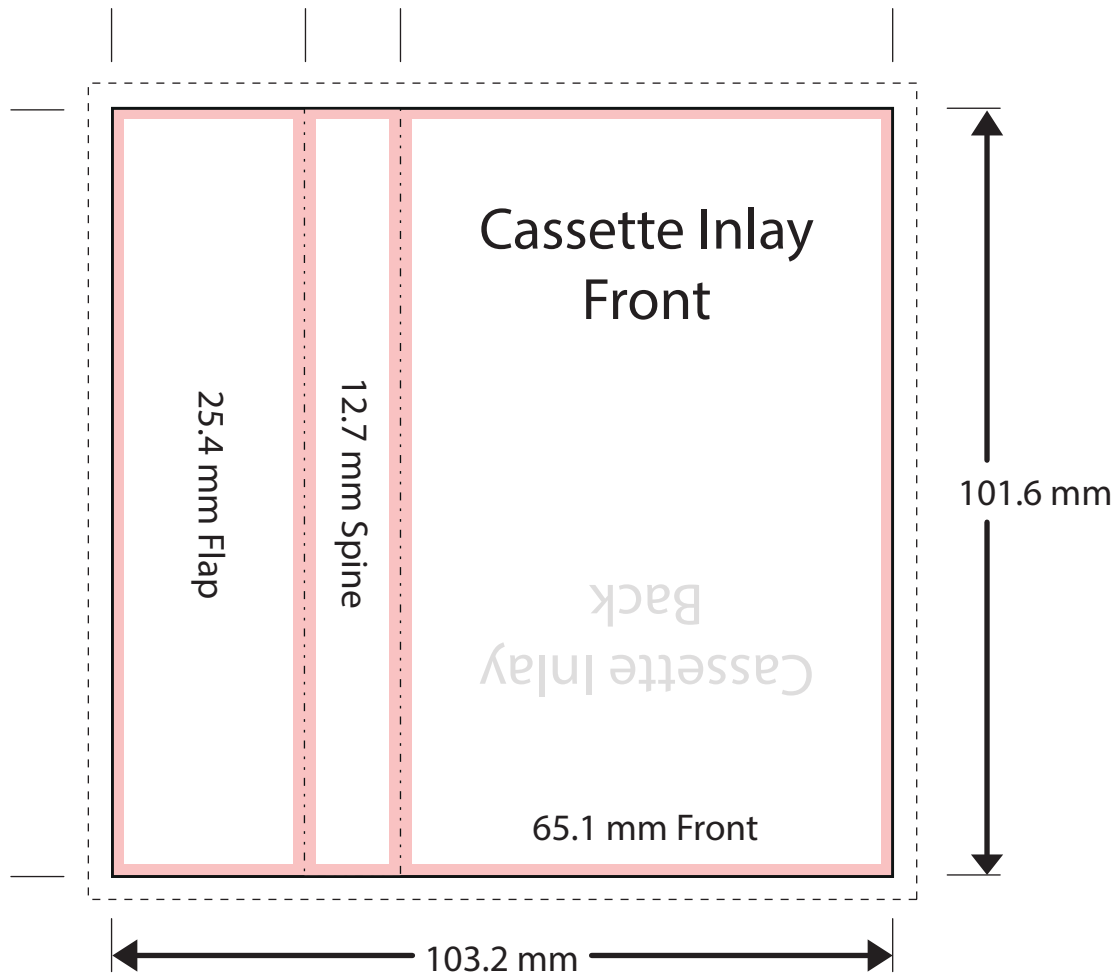
14 mm

127 mm

150 mm

J-Card Inlay (3-Panel) & Cassette Label

No text area    Bleed    Trim    Fold



- J-Cards are available with up to 8 panels (foldout). Contact us for specifications.
- Avoid placing text too close to the edge of the artwork. This is to prevent such details from being cropped when artwork is guillotined.
- Artwork must 'bleed' beyond the edges of your design to help facilitate the guillotining process.
- Insert/inlay artwork should be supplied in PSD, PDF, EPS, JPG or INDD formats (preferably unflattened) at a minimum of 300 dpi, colour mode CMYK.
- Any fonts used should be provided along with the artwork.
- Alternatively, type can be 'converted to outlines' prior to the document being supplied.

- When producing artwork for DVD/Blu-ray menus it is important to consider Safe Title/Action (see example)

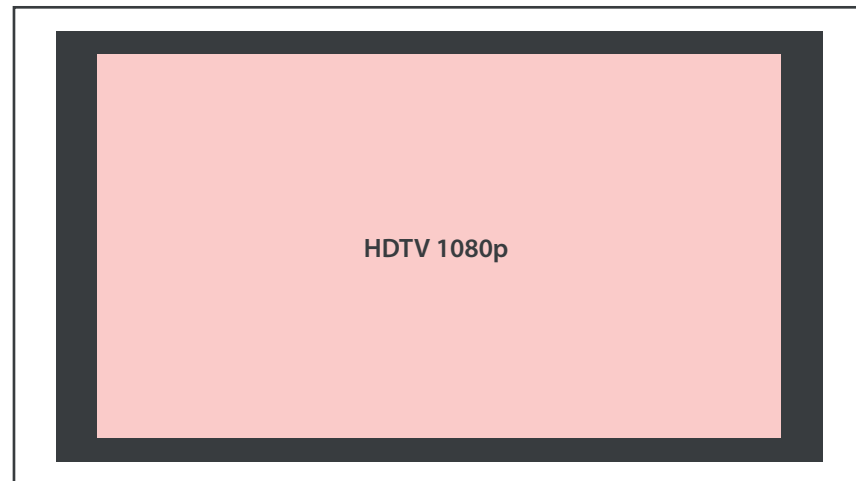
- No important action (video) should appear beyond the grey border and no text (titles) should appear outside of the green area. Any visual outside of these areas may be cropped when viewed on a television

- The screen examples on the right are our most requested formats. Should you require other format specifications, such as NTSC, please contact us

- Artwork should be supplied in the PSD, PDF, EPS or JPEG formats at 72dpi. Complex designs should be supplied as an unflattened PSD document



Frame Size: 720 x 576 pixels      Resolution: 72dpi  
Pixel Aspect Ratio: PAL Widescreen



Frame Size: 1920 x 1080 pixels      Resolution: 72dpi  
Pixel Aspect Ratio: Square Pixels

— Safe Action

— Safe Title

**MINTCOPY**  
MEDIA DUPLICATION & PRINT

Studio House, Heaton Mersey Industrial Estate, Battersea Road, Stockport, SK4 3EA  
Tel: 0161 432 9012 | [www.mintcopies.com](http://www.mintcopies.com) | [info@mintcopies.com](mailto:info@mintcopies.com)